

WHERE CAN YOU GET SUPPORT?

- contact the speech therapist in your school, at the medical centre, at the hospital
- contact the teacher, the educator, or the librarian in your kindergarten, at school or in the library

Centre for Rehabilitation
Faculty of Education and Rehabilitation Sciences in Zagreb
– centar.erf.unizg.hr

The SUVAG Polyclinic
Zagreb, Kneza Ljudevita Posavskog 10
– www.suvag.hr/kontakt

Education and Teacher Training Agency
Central Office Zagreb, Donje Svetice 38
– www.azoo.hr

Croatian Logopedic Association
– www.hld.hr

Croatian Dyslexia Association
– www.hud.hr

Inclusion Support Centre IDEM
Zagreb, Illica 48
– www.idem.hr

Croatian Library Association
– www.hkdrustvo.hr
– hkdrustvo.hr/hr/strucna_tijela/30/publikacije

HOW TO JOIN THE CAMPAIGN?

By organizing events (workshops, lectures, forums, conferences, exhibitions...)



Send us announcements of your programmes and experiences to the following e-mail address

i.ja.zelim.citati@gmail.com



Visit us at our Facebook page
facebook.com/IJaZelimCitati/

ORGANIZER



CO-ORGANIZERS



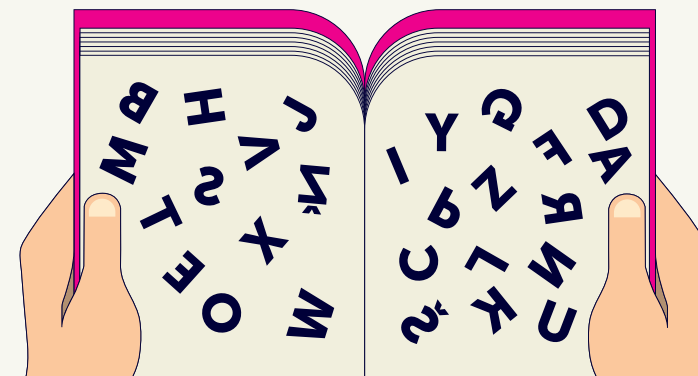
Knjižnice grada Zagreba



„I JA ŽELIM ČITATI!“
NACIONALNA KAMPANJA ZA OSOBE S
TEŠKOĆAMA ČITANJA I DISLEKSIJOM

I WISH TO READ TOO!

NATIONAL CAMPAIGN FOR PERSONS WITH
READING DIFFICULTIES AND DYSLEXIA



PERSONS WITH READING DIFFICULTIES

are persons with difficulties in decoding the text, persons who read slowly and indistinctly, and persons who do not understand the sentences they have just read.



PERSONS PRONE TO READING DIFFICULTIES

- Blind and visually impaired persons
- Deaf and hard of hearing persons
- Persons with intellectual difficulties
- Persons with motor difficulties
- Persons with ADHD syndrome (attention deficit/hyperactivity disorder)
- Persons with autism
- Persons with multiple disorders (combined difficulties)
- Neglected and educationally neglected persons
- Elderly

WHAT IS DYSLEXIA?

Dyslexia is a neurological disorder which impedes language learning and processing, and is manifested in problems with reading, orthography, writing, speech and/or listening, despite regular intelligence and sufficient effort.

WHY IS THE CAMPAIGN NEEDED?

- ▶ **Modification of the copyright and related rights law** (NN 167/03, article 86) in order to make specially adapted books more accessible to persons with reading difficulties and dyslexia.
- ▶ **Cooperation between institutions and experts**, in order to improve support to persons with reading difficulties and dyslexia, not able to read standard printed material
- ▶ **Larger network of libraries** implementing programmes of support to persons with reading difficulties and dyslexia and programmes for the print disabled
- ▶ **Introduction of systematic, nationwide financing** for publishers of easy-to-read books and daisy books
- ▶ **Promotion of reading** for all the citizens
- ▶ **Campaign advocacy** with the politicians, both locally and nationwide

WHO BENEFITS FROM THE CAMPAIGN?

- persons with reading difficulties
- persons with dyslexia
- parents, broader family, custodians, and all the other surrounding persons with reading difficulties
- educators, teachers and other professional staff in preschools, primary and secondary schools and teaching staff in higher education institutions
- medical staff and social workers
- speech therapists
- librarians and publishers
- employers
- volunteers
- other persons involved or interested in the problems dealt by the Campaign

